



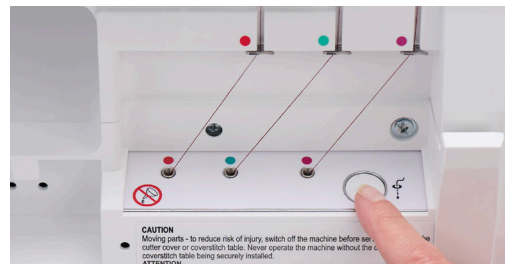
Adventure *is in the Air*

Explore more projects effortlessly with the
AMBER™ Air S | 600 Air-Threading Coverlock Machine



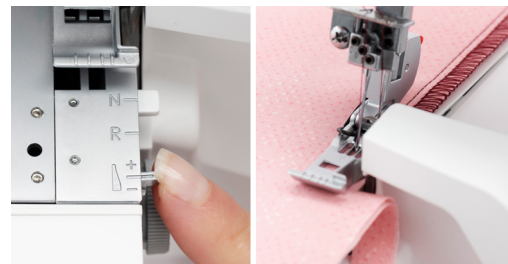
The Sky's the Limit to What You Can Create

Discover how the innovative technology in the AMBER™ Air S | 600 coverlock machine could lead you anywhere.



THREAD WITH THE TOUCH OF A BUTTON

The One-Touch Electronic Air-Threading Loopers allow you to effortlessly change stitch types and threads with the simple push of a button.



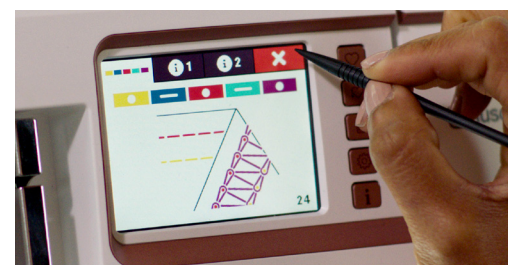
STAY PRECISE WITH YOUR OVEREDGE

The patented Precise Thread Control feature allows you to fine-tune the overedge threads for perfect stitch formation along fabric edges.



PUT YOUR BEST STITCH FORWARD WITH THE EXCLUSIVE SEWING ADVISOR

This exclusive feature instantly sets the best stitch length, differential feed and thread tension for your chosen fabric type – all to give you a perfect result.



CONFIDENTLY CREATE WITH A COLOR TOUCH SCREEN

When you select your stitch, the optimal thread tensions, recommended stitch length and more are automatically set on the convenient Color Touch Screen.

Venture Out with 26 Stitches

26 STITCHES

The AMBER™ Air S | 600 coverlock machine offers a wide range of stitches for utility and decorative sewing.

COVERSTITCH

Triple coverstitch and double coverstitch narrow and wide for activewear, hems, and decorative applications.

CHAINSTITCH

Seams, basting, and decorative applications.

5-THREAD SAFETY STITCH (WIDE AND NARROW)

A chainstitch and 3-thread overlock for durable, professional seams.

4-THREAD SAFETY STITCH (WIDE AND NARROW)

A chainstitch and 2-thread narrow or wide overedge for durable seams.

4-THREAD OVERLOCK

Seams and seam finishing.

3-THREAD PICOT EDGE

Delicate finish for edges on lightweight fabrics.

3-THREAD OVERLOCK (WIDE AND NARROW)

Seam finishing and decorative edges.

3-THREAD NARROW EDGE

Fine, narrow hems and edging.

3-THREAD ROLLED EDGE

Rolled hems and edges.

3-THREAD FLATLOCK (WIDE AND NARROW)

Flat seams and decorative embellishment.

3-THREAD STRETCH OVERLOCK

Seams on super stretch fabrics.

3-THREAD WRAPPED OVERLOCK (WIDE AND NARROW)

Sew seams in stretch fabric.

2-THREAD OVERLOCK (WIDE AND NARROW)

Overcasting for single fabric layer.

2-THREAD WRAPPED OVERLOCK (WIDE AND NARROW)

Edge finish for lightweight fabrics.

2-THREAD ROLLED EDGE

Edging on lightweight fabrics.

2-THREAD NARROW EDGE

Fine, narrow hems and edging.

2-THREAD FLATLOCK

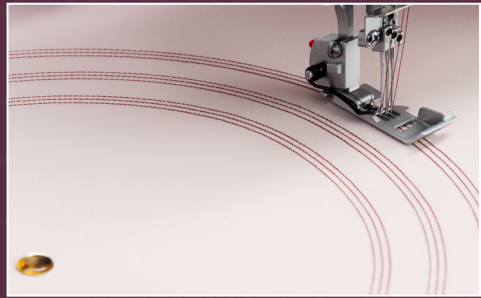
Flat seams and decorative embellishment.





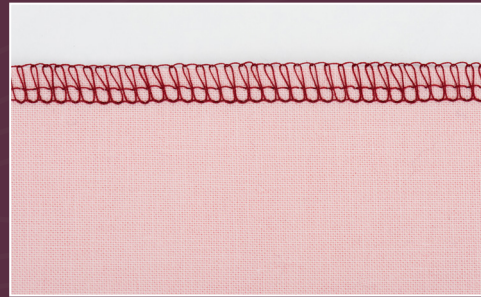
▲ Work on the Bright Side

The 5 LED lights provide exceptional illumination of the sewing area for optimal visibility in any room.



▲ Extension Table Included

The extension table provides an additional 12" (30cm) of workspace. A series of evenly spaced pin holes integrated into the table's surface accommodate the included pivot pin for circular stitching.



▲ Auto Thread Tension Calibration

The AMBER™ Air S|600 coverlock calibrates the thread tension for every stitch automatically, giving you the optimal settings for your selected stitch, with the ability to fine-tune.



▲ Triple and Double Coverstitches

Enjoy triple and double coverstitch options for hems and more, plus chainstitching for construction and embellishing.



▲ Speed Control

Choose from five different speed settings, allowing you to set your machine's maximum sewing speed to your preference.



▲ Optimum Stability for All Projects

A reinforced frame makes the AMBER™ Air S|600 coverlock machine stable for all types of sewing, from lightweight to heavy.



▲ Easily Accessible Tweezer and Scissors Holder

Your tweezers and scissors have a dedicated spot with built-in holders on the thread mast.



▲ Differential Feed

Create perfectly even seams with no distortion, stretching or puckering.



▲ Electronic Piercing Power

Enjoy stitch-by-stitch control with full piercing power at all speeds.



▲ Go Hands-Free with the Knee Lift

Use the knee lift to raise and lower the presser foot, allowing you to keep both hands on your project.



Make Your Next Project a Breeze with User-Friendly Features

STITCH MEMORY

Customize and save stitch settings for future use.

DELIGHT IN THE DETAILS WITH THE FREE ARM

The free arm provides easy access for smaller projects like cuffs, hems and children's clothing.

ENJOY MORE SPACE WITH THE INCLUDED EXTENSION TABLE

The included sturdy extension table provides 12" (30cm) of additional level workspace. This table also features a series of evenly spaced pin holes to accommodate the included pivot pin for circular stitching.

ADJUSTABLE PRESSER FOOT PRESSURE

Presser foot pressure can be increased or decreased to accommodate various fabric thicknesses and ensure a smooth fabric feed.



Stitch without a Hitch
Using the Complete Features of the

Amber™ Air S | 600

Coverlock Machine



- One-Touch Electronic Air-Threading Loopers
- Color Touch Screen
- Exclusive SEWING ADVISOR
- Exceptional LED Lighting
- 26 Stitches
- Precise Thread Control
- Free Arm
- Knee Lift
- Extension Table Included for 12" (30cm) of additional space
- Triple and Double Coverstitch Options
- Reinforced Frame for Stability
- Automatic Tension
- Spacious Sewing Area (123mm x 64mm)
- Stitch Memory
- Speed Control
- Built-In Tweezer and Scissors Holder
- Built-In 2-Thread Converter
- Differential Feed
- Electronic Piercing Power
- Stitch Safety Lock
- Adjustable Presser Foot Pressure
- Threading Guides for Wide Range of Thread Types
- Adjustable Stitch Length
- Adjustable Cutting Width
- Extra Presser Foot Height
- Snap-On Presser Feet
- Universal Standard Presser Foot
- Soft Grip Handwheel
- Key Accessories Included
- Optional Accessories Available
- Tension Release
- Integrated Thread Cutter
- Moveable Upper Cutter
- Carry Handle
- Waste Tray

VIKING, and AMBER, are trademarks of K SIN Luxembourg II, S.a.r.l. HUSQVARNA and the "H" Crown Device are trademarks of Husqvarna AB and are used under license. ©2021 K SIN Luxembourg II, S.a.r.l. All rights reserved. This brochure was printed for SVP Worldwide, 1714 Heil Quaker Blvd Suite 130, La Vergne, TN 37086, USA.