



View this machine and more at:

<https://www.thesewingstudio.co.uk>



eXtend

OVERLOCK & COVERLOCK MACHINES

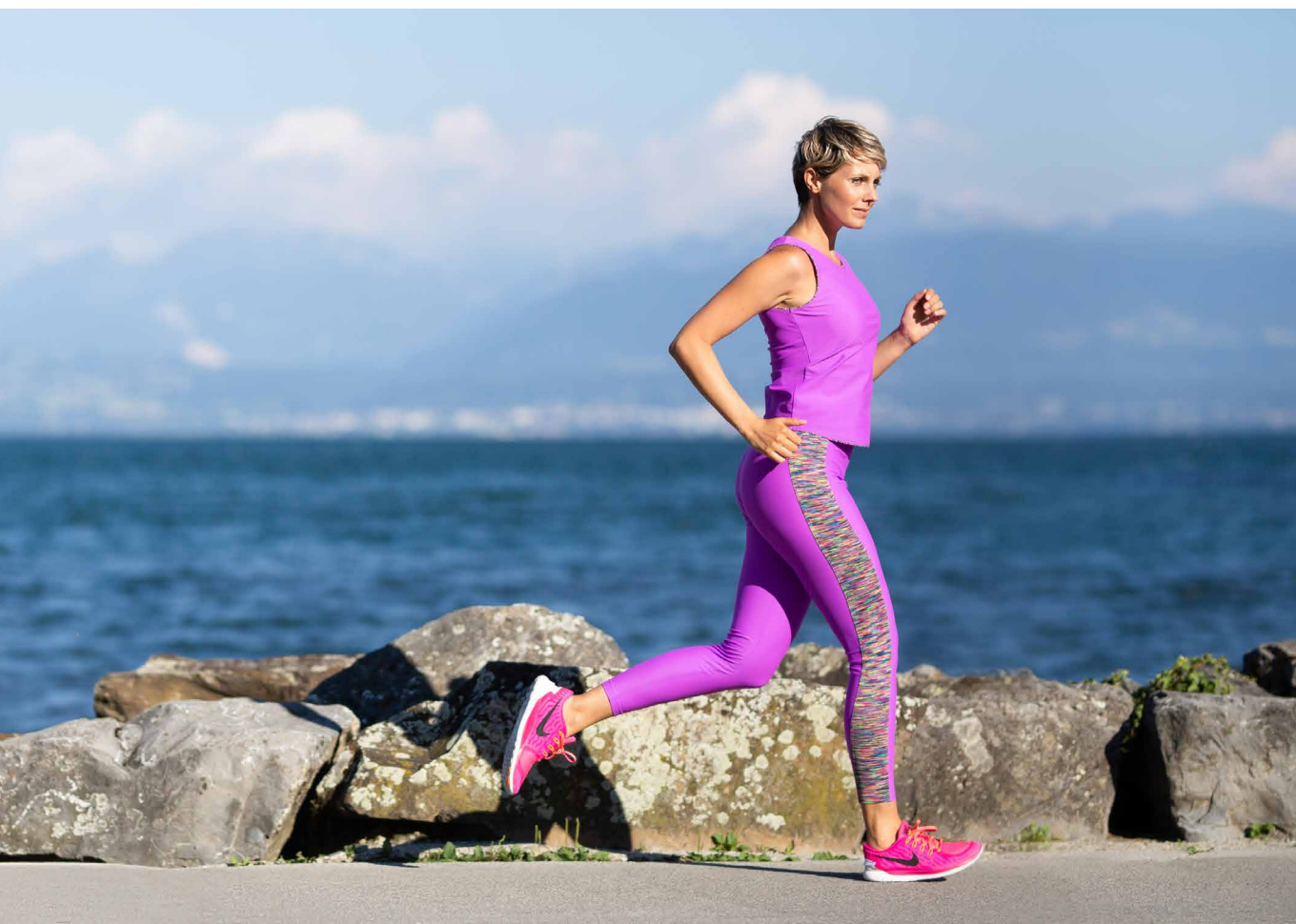


Perfection by your side

elna eXtend series

THE ULTIMATE DRESSMAKING TOOLS

If you are passionate about sewing clothes for yourself or your family, an elna overlocker is the ideal companion machine. Its special stitch programs and settings are matchless when it comes to perfecting your homemade garments and easily handling stretch and knit fabrics, such as trendy jerseys.



ADDING A PROFESSIONAL FINISH WITH A VERSATILE EXTEND OVERLOCK OR COVERLOCK MACHINE

Ideally used together with a traditional sewing machine, elna eXtend overlock and coverlock machines are equally useful for assembling and finishing garments, even using the most challenging fabrics, from lightweight to thick. Because these technical models can sew the specialized stitches used in the garment industry, you can achieve the same neat, professional-looking finish for your unique homemade pieces that you find in ready-made clothing. In addition, you can cut, neaten edges and stitch seams together all in one step. As a result, you can shorten skirts or trousers in no time, achieve a flawless edge on the seam allowance and a beautiful and durable hem. In this brochure we show you what an elna eXtend machine can do for you.

SLOW FASHION IS IN!

Unlike throwaway, mass-produced garments that follow fast-paced and constantly changing fashion trends, homemade clothes are the expression of skilled craftsmanship, attention to detail and personal style. By definition, making your own garments is about producing slow wear and ties into eco-sustainability and responsible consumerism.

Because you can carefully select the fabrics that you want to use and because you devote so much passion and care to your creations, they will be priceless and precious pieces to cherish and wear with pleasure over time. An overlock or coverstitch machine will contribute to producing beautifully finished, long-lasting and quality garments.

SUSTAINABLE SEWING BY ELNA

With an eXtend overlock and coverlock machine, you chose elna's high quality standards and excellent after-sale service. With quality and endurance translating into product durability, your machine's extended lifetime contributes to saving resources and ultimately helps protecting our planet for future generations.

A 5-year warranty is automatically included with our products and well demonstrates that we positively believe in their longevity.



eXtend 264

4/3 threads
compact and essential
page 10



eXtend 664 & 664PRO

4/3 or 4/3/2 threads (PRO)
for easy setting
page 6



eXtend 864air

4/3/2 threads
for easy threading
page 4



eXtend 845

5/4/3/2 threads
with coverstitch and automatic
tension control
page 10



easycover

4/3/2 threads & 3/2/1 needles
the finishing specialist for cover and
chain stitch
page 9

INTRODUCING THE ELNA EXTEND RANGE

Elna overlock and coverlock models ensure high-quality results on all types of fabrics. In our eXtend range you will find the perfect companion machine for easy overlocking with 3, 4 or 5 threads.

eXtend 864air

BREATHE FREELY: THREADING AN OVERLOCKER HAS NEVER BEEN SO EASY!

We launched our eXtend 864air to offer you a totally smooth overlocking experience. This superior model features both exceptional capabilities and solutions for super-easy threading. You can relax, start your project in no time and fully enjoy all the benefits of an overlocker.



SHOOTING LOCATION
Sewing and fashion design studio
P&L Mercier, Etoy, Switzerland.
(www.plmercier.com)

In addition to amazing sewing space and high standards of comfort, our eXtend 864air offers a comprehensive range of premium features. The ability to sew with 4, 3 or 2 threads allows for a broad range of stitch programs for a variety of sewing tasks and finishes, including rolled hems, overedging or gathering.

TIME-SAVING FEATURES FOR LIGHT THREADING

Threading an overlocker can be daunting for users who are not familiar with specialized models of this kind. With the air-threading system of the elna eXtend 864air, threading your machine becomes effortless: as light as the air that pushes the threads through the lower and upper loopers. For additional comfort, we have added a built-in needle-threader. That's all you need for tangle-free overlocking.

EXPERTISE AND ABSOLUTE PRECISION BY YOUR SIDE

Its unique 8-piece feed dog system ensures smooth feeding of hard-to-work and slippery fabrics. Combined with the adjustable differential feed, this feature provides expanded fabric capability with unparalleled stitch quality. You will be impressed by the eXtend 864air's stable and noiseless operation even at high speed, not to mention the easy and precise adjustment of key settings.



AIR THREADING SYSTEM

The new air threading system makes it effortless to thread your machine. You can thread both the upper and lower looper by just inserting the thread into each port and pressing the threading lever: a blow of air pushes the thread through the looper and you're done.



BUILT-IN NEEDLE-THREADER

A handy built-in needle-threader puts an end to fiddly threading and you can quickly get started or change threads as you sew. Simply slide the lever of the needle threader down and easily thread the right and left needle.



8-PIECE FEED DOG SYSTEM

The higher number of pieces in the feed dog of the elna eXtend 864air compared to other models ensures perfect and smooth feeding of all sorts of fabric, from lightweight to thick, as well as jersey and other stretch knit fabrics.



5-LEVEL PRESSER FOOT PRESSURE DIAL

You can adjust the pressure of the presser foot to the type of fabric that you are sewing. The possibility of selecting five different levels enables you to handle a wide range of materials without any problem. For normal sewing you can simply dial 'N'.



STANDARD ACCESSORIES

Accessory box, needle set, needle holder, lint brush, oil tube, spool cap (large), nets, screwdriver large and small, spare upper blade, double-ended wrench, tweezers, looper threading wire, waste tray, foot controller and dust cover.

eXtend 664 & 664PRO

FOLLOW THE GUIDE: OVERLOCKING MADE SIMPLE!

Experience the world of overlockers in a simpler way and with easier operation than you ever thought possible. With the elna eXtend 664 in both professional and standard version, you will have a new best friend! These overlock models allow you to neatly cut, hem and sew in one step and no time.



INNOVATIVE SOLUTIONS FOR USER-FRIENDLY SETTING

To start with, the color-coded marking makes threading easier for you. Calibrating the machine takes one single turn: all the important settings such as stitch length, differential feed ratio or thread tension are easy to recognize and adjust. The elna-exclusive reference panel on the 664PRO is a very helpful feature that clearly shows the required settings for the selected program and perfectly sewing your stitches.

LIKE A PROFESSIONAL DRESSMAKER

With an all-round machine like the elna eXtend 664 or 664PRO, you can easily handle a variety of fabrics including the most difficult and lightweight, such as jersey, silk or fine voile. Features such as the adjustable presser-foot pressure control help make this easier. With these models you can sew 2 (PRO version), 3, or 4 spools of thread all at once, increasing the range of stitches for special uses.



PROGRAM DISPLAY PANEL*

This exclusive reference panel is displayed on the front of the machine for optimal visibility and shows the required tension settings for the selected stitch program. A practical user guide to set up your overlocker step-by-step without forgetting anything.



WASTE TRAY*

A functional waste tray can be attached to the machine and helps you keep your sewing area tidy by catching fabric off-cuts and trimmed threads while you work.



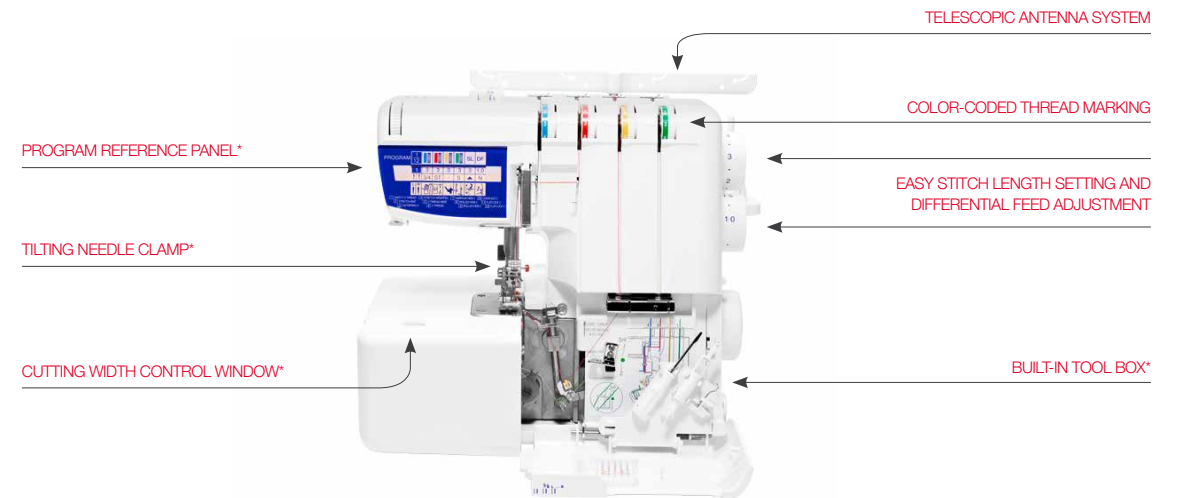
EASY SETTING

The handy and clearly marked dials are strategically placed for easy access. The stitch length and differential feed can be easily adjusted.



TILTING NEEDLE CLAMP*

The needle clamp can be tilted up to ensure smooth needle placement. A unique and smart system for easily inserting and removing needles.



*Exclusively for elna 664PRO

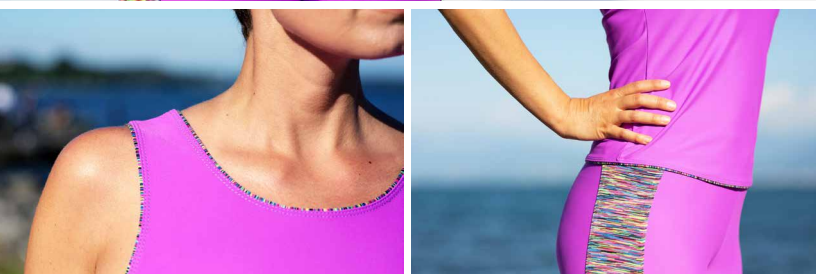
STANDARD ACCESSORIES 664

Accessory box, needle set, needle-threader, lint brush, oil tube, spool cap (large), nets, screwdriver large and small, tweezers, foot controller and dust cover.

664PRO additionally

Upper blade, spreader, snap-on thread guide, tension release clip, 2-thread converter, waste tray.

Yoga-wear, from functional to Athleisure



GET INSPIRED BY OVER- AND COVERLOCKING TECHNIQUES

Adding an overlock or coverlock machine to your sewing appliance will upgrade your capabilities with spectacular results. They are unparalleled when it comes to beautifying your wardrobe or producing trendy sportswear.

With yoga-style clothing uplifted by fun colors and patterns, comfortable leggings become popular Athleisure items that you can wear on any everyday occasion. We show you how to sew complicated fabrics, such as fine jersey or technical Lycra®. We have used these fabrics to create a contemporary and all-purpose three-piece yoga outfit.

VERSATILE STITCH PROGRAMS FOR PERFECT FINISHES

We show you how to use a 4-thread overlock stitch for assembling and a wide 3-thread coverhem stitch for sewing perfect hems.

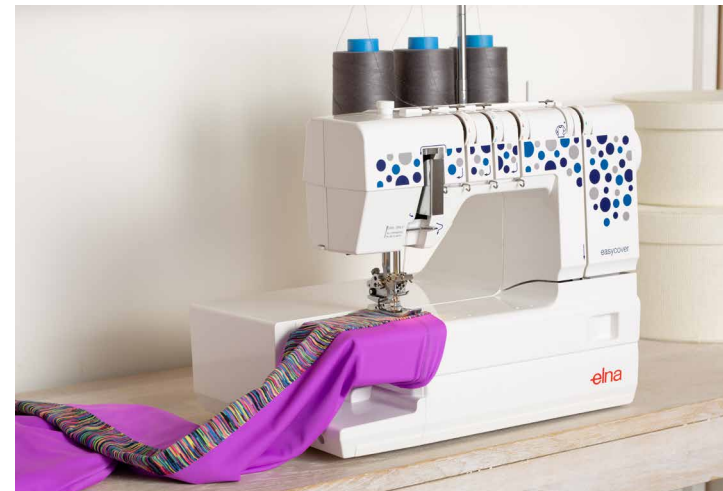
Learn how to create these gorgeous leggings and top. The step-by-step explanation and pattern are available at elna.com/Inspiration.

easycover

ADVANCED CAPABILITIES FOR SPECIALIZED SEWING

The elna easycover is the perfect companion machine for use with an elna overlocker and sewing special cover hem, chain and triple cover stitches. Its cutting-edge motor offers exceptional sewing speed and power for heavy-duty tasks and stability. Our Tension Level Control (TLC) system ensures perfect stitch quality on all types of fabrics: the looper tension is automatically adjusted for smooth handling of the transition from heavier knits to lightweight and stretch fabrics!

With a unique design inspired by conventional sewing machines, the elna easycover provides an extra-large sewing area, free arm configuration and convenient location of the dials for unmatched user comfort.



KEY FEATURES FOR CREATING TRIPLE, WIDE AND NARROW COVER STITCHES

- ▶ 14 stitch programs
- ▶ 4/3/2 threads
- ▶ 1, 2 or 3 needles
- ▶ Double-needle wide and narrow cover stitch
- ▶ Triple-needle cover stitch
- ▶ Chain stitch (1 needle, 2 threads)
- ▶ Automatic tension release
- ▶ Maximum sewing speed 1'000 spm

TECHNICAL FEATURES

Category	Coverlocker
Machine size	W414 × H335 × D243 mm
Machine weight	8.6 kg
Bed type	Free-arm / Flat bed convertible
Sewing space	Extra-wide (143 x 100 mm)
Upper looper threader Lower looper threader	Manual Looper disengages for easy threading
Color-coded threading routes	X
Thread-cutter	Built-in
Feed dog	6 pcs.
Foot pressure adjustment	X
Thread tension control	Tension Level Control TLC: Automatic tension control for seam adjustment on all types of fabric
Automatic tension release	X
Program display panel	In the front cover
Presser foot height	5.5 mm
Clip-on presser foot system	X
Lighting	1 built-in white LED lamp in 1 location
Number of spool pins	4
Telescopic thread antenna	X
Carrying handle	X

GENERAL

PROGRAMS

- Triple cover stitch (6mm, 3 needles / 4 threads)
- Double wide cover stitch (6mm, 2 needles / 3 threads)
- Double narrow cover stitch (3mm, 2 needles / 3 threads)
- Chain stitch (1 needle / 2 threads)

SEWING

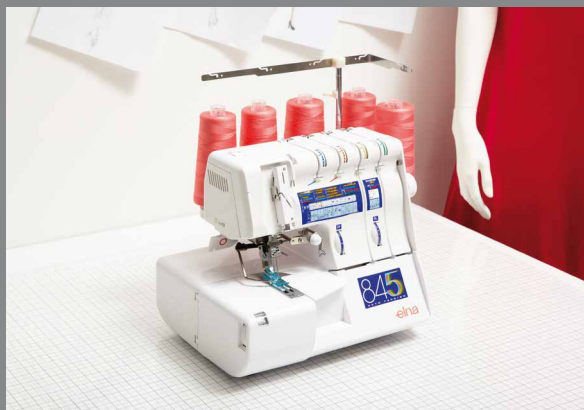
Number of programs	14
Number of threads	2/3/4 threads
Number of needles	1/2/3 needles
Stitch length	1 to 4 mm
Stitch width	max. 6 mm
Adjustable differential feed	0.5 to 2.25
Maximum speed	1'000 spm

STANDARD ACCESSORIES

Accessory box, needle set, needle-threader, attachment screws for optional accessories, lint brush, spool holders, nets, screwdriver small and large, tweezers, foot controller and dust cover.

eXtend 845

The elna eXtend 845 is a high-end 5-thread overlocker also offering a cover stitch and an exclusive top cover-hem program. Available in three different versions, this program creates the same highly decorative cover stitch on both sides of the fabric. The unique automatic tension control automatically sets the appropriate tension levels for the selected stitch. Combined with the built-in program reference display panel, it makes the eXtend 845 a comprehensive, yet extremely easy-to-use model.



STANDARD ACCESSORIES

Accessory box, top cover foot F, round top cover guide, triangle top cover guide, quilting guide, needle set, needle-threader, lint brush, oil tube, spool cap (large), spool holders, foam pads, spreader, screwdriver small, spare upper blade, wrench, tweezers, clip-on thread guide, tension release clip, antenna, waste tray, sewing table, foot controller and dust cover.

eXtend 264

Ideal for beginners or occasional sewists, the eXtend 264 is compact and functional. It offers 4, 3 and 2-thread stitching and essential overlock features while delivering quality results. You can complete every step of your sewing projects, by cutting, sewing together and finishing in one operation.



STANDARD ACCESSORIES

Needle set, needle-threader, screwdriver small and large, tweezers and foot controller.

SHOOTING LOCATION

Special thanks to the sewing studio P&L Mercier in Etoy for hosting our photo shoot for the various models presented in this brochure, i.e. at pages 4, 6, 9 and 10. (www.plmercier.com)

1



ADJUSTABLE DIFFERENTIAL FEED

Depending on the type of fabric you are sewing, you can adjust the differential feed ratio to prevent the fabric from stretching or puckering. A handy dial enables you to set the appropriate level and smoothly sew perfectly even seams. The 864air features a smart dial also integrating the stitch length adjustment for even simpler operability.

2



BUILT-IN 2-THREAD CONVERTER

A user-friendly built-in converter enables you to easily move to 2-thread stitching for programs such as rolled hems or flatlock stitch, that do not involve the upper looper thread. (eXtend 664PRO, 845 and 864air)

3



INSTANT ROLLED HEM

No need to change the needle plate. Simply push the slider from standard to rolled hemming position and you're ready to sew beautiful rolled hems.

4



ACCESSORY STORAGE

You can keep the most frequently used tools in the handy compartment that is integrated into the front flap of the machine (eXtend 664PRO and 845) or in a convenient accessory case (eXtend 664 and 864air).

TECHNICAL FEATURES

	264	664	664PRO	845	864air
Category	Overlocker	Overlocker	Overlocker	Overlocker	Air threading overlocker
Machine size	W384 × H349 × D370 mm	W340 × H300 × D260 mm	W340 × H300 × D260 mm	W317 × H269 × D250 mm	W347 × H299 × D284 mm
Machine weight	7.1 kg	6.3 kg	6.3 kg	9 kg	7.9 kg
Bed type	Flat-bed	Flat-bed	Flat-bed	Flat-bed	Flat-bed
Upper looper threader	Manual	Manual	Manual	Manual	One push blast air threading system (manual)
Lower looper threader	Manual	Manual	Manual	Manual	Built-in
Color-coded threading routes	X	X	X	X	X
Program display panel	-	-	X	X	-
Thread-cutter	Built-in	Built-in	Built-in	Built-in	Built-in
Feed dog	4 pcs.	4 pcs.	4 pcs.	5 pcs.	8 pcs.
Foot pressure adjustment	Manual	Dial - 5 positions	Dial - 5 positions	Dial - 6 positions	Dial - 5 positions
Thread tension control	Manual	Manual	Manual	Automatic	Manual
Presser foot height	5 mm	5.5 mm	5.5 mm	5.5 mm	5.5 mm
Clip-on presser foot system	X	X	X	X	X
Instant rolled hem device	X	X	X	X	X
Top cover device	-	-	-	X	-
2-thread converter	-	-	Built-in	Built-in	Built-in
Tilting needle clamp	-	-	X	-	-
Safety device	-	-	Front cover	Front and side covers / Tilting needle clamp / Presser foot	Looper cover / Side cover / Presser foot lifter
Lighting	1 built-in white LED lamp in 1 location	1 built-in white LED lamp in 1 location	1 built-in white LED lamp in 1 location	1 built-in white LED lamp in 1 location	1 built-in white LED lamp in 1 location
Number of spool pins	4	4	4	5	4
Telescopic thread antenna	X	X	X	X	X
Built-in accessory storage	-	-	X	X	-
Carrying handle	X	X	X	X	X
Number of programs	7	8	12	20	13
Number of threads	3/4 threads	3/4 threads	2/3/4 threads	2/3/4/5 threads	2/3/4 threads
Number of needles	1/2 needles	1/2 needles	1/2 needles	1/2/3 needles	1/2 needles
Stitch length	1 to 4 mm	1 to 5 mm	1 to 5 mm	0.5 to 5 mm	1 to 5 mm
Adjustable differential feed	0.5 to 2.25	0.5 to 2.25	0.5 to 2.25	0.5 to 2	0.5 to 2
Upper knife opening	6 mm	7 mm	7 mm	8 mm	10 mm
Adjustable cutting width using left needle not using left needle	3.1 to 7.3 mm	3.0 to 7.0 mm	3.0 to 7.0 mm	3.0 to 7.0 mm	5.5 to 7.5 mm 3.3 to 5.3 mm
Maximum speed	1'300 spm	1'300 spm	1'300 spm	1'300 spm	1'300 spm
5-thread programs:	-	-	-	overlock, top cover hem (triple, wide and narrow)	-
4-thread programs:	overlock	safety, stretch knit, gathering	safety, stretch knit, gathering, stretch wrapped	safety, stretch knit, triple cover hem	overlock, stretch knit, decorative overedging, gathering
3-thread programs	overlock regular and wide, rolled hem, narrow hem, picot hem, decorative overedging	overlock regular and wide, narrow hem, rolled hem, flatlock	overlock regular and wide, narrow hem, rolled hem, flatlock	overlock regular and wide, flatlock, blanket, narrow hem, rolled hem, cover hem wide and narrow, stretch wrapped	overlock regular and wide, rolled hem, narrow hem, picot hem, flatlock, pintuck
2-thread programs	-	-	rolled hem, overcast, flatlock	flatlock, rolled hem, chainstitch, overcast	flatlock, rolled hem



crafted with love

Elna International Corp. SA, Geneva, Switzerland

Subject to change without notice

© 2018

elna.com