



View this machine and more at:

<https://www.thesewingstudio.co.uk>



# eXperience

ELECTRONIC SEWING MACHINES



Featuring eXperience 520S-540S & 550-560-570



## elna eXperience series

ALL-PURPOSE. HIGH-QUALITY. AFFORDABLE.

Hobby sewing can be great fun. Creating something with your hands is truly rewarding. Focusing on your creative projects helps you relax in your leisure time and provides a sense of accomplishment. Our versatile and easy to use elna electronic sewing machines are designed to give you a totally stress-free sewing experience and bring you all the pleasure and gratification a fun hobby should provide.

### EASE OF USE AND VERSATILITY AT AN AFFORDABLE PRICE

Because the elna eXperience sewing machines are very intuitive, they will simplify your sewing tasks, saving you time and trouble. They feature many automated functions, facilitated threading, a jam-proof horizontal drop-in bobbin, guided setting of stitch length or tension control to limit possible mistakes, as well as direct and quick selection of key functions and most frequently used stitches. These models are perfect for the contemporary amateur sewist.

If you have taken up home sewing or dressmaking, you will find the ideal machine among the five models in our eXperience range. Budget-friendly but complete, they offer a broad range of functions for a versatile use.

In the next pages, we present these models and compare their features to help you find the one that best suits your needs.

### REUSE, RESHAPE, CREATE.

Old things can tell many stories - stories of places, people and emotions. In this brochure, we share sewing ideas and show you how to transform clothes or home accessories, bringing new life to old items instead of throwing them away. While altering an existing piece can be less daunting than crafting a new one from scratch,

customizing also enables you to create your unique and original style. In addition, by recycling unused pieces, you contribute to reduce waste and preserve natural resources. This is a great way of supporting eco-friendly practices!

### SUSTAINABLE SEWING BY ELNA

With an eXperience sewing machine, you chose elna's high quality standards and excellent after-sale service. With quality and endurance translating into product durability, your sewing machines' extended lifetime means that you don't need to replace it with a new one in a short time. As a result, this can save

resources and energy, and ultimately helps protecting our planet for future generations.

A 5-year warranty is automatically included with our products and well demonstrates that we positively believe in their longevity.



### eXperience 550-560-570

Find out the detailed features on page 4 and get inspiration for your fashion lookbook.

### eXperience 520S-540S

On page 8 you will find all the details with ideas for interior decoration and more.

### Compare

The overview on page 10 provides an extensive list of sewing and technical features with the comparison between individual models.



### SWISS DESIGN

With their all new and original design, our 550, 560 and 570 eXperience models make a striking visual statement.

## eXperience 550-560-570

### AN INSPIRATIONAL ADDITION TO YOUR CREATIVE UNIVERSE

Wearing something homemade is really trendy. Be part of the makers movement and join hand crafted fashion and design enthusiasts. The eXperience 550-560-570 sewing machines will support you along the way, giving you all the tools you need to achieve your creative ideas in this and many other areas.

Reliable and comprehensive, these all-round machines will also handle an array of different fabrics with ease.

#### EXTENDED COMBINATION OF INVALUABLE FEATURES

Like any other elna computerized sewing machine, the new eXperience models have been designed to suit multiple applications and purposes. A variety of smart features that increase your sewing efficiency can easily be operated with a button, such as the locking stitch, the up/down needle position or the automatic thread cutter on the 560 and 570 versions.

The backlit LCD screen with easy navigation guides you in the selection of the suitable presser foot and indicates the optimum stitch length and width that are set automatically.

#### A MYRIAD OF DECORATIVE AND FUNCTIONAL STITCHES

Depending on the version, these models offer 50, 100 or 200 beautiful stitches in 7-mm width, including three, seven or twelve styles respectively of automatic one-step buttonholes.

No matter if decorative or functional, you will appreciate the precision and regular quality of all the stitches. With the 570, you can also create personal and unique stitch combinations.



Photo shooting location:  
Le Café Restaurant du Parc des Bastions, Geneva.



### REUSE, RESHAPE, CREATE

We used the elna eXperience 570 to transform a frock coat bought in a sale into a stylish and versatile ensemble.

By repurposing the original garment, we produced two exclusive pieces with a better fitted, highly feminine silhouette. Dazzling zippers add the finishing touch.

From elegant to casual, the new ensemble can be harmonized to your individual style and offers a variety of options for creating your personal fashion lookbook.

How-to guide and pattern available at [elna.com/Inspiration](http://elna.com/Inspiration).

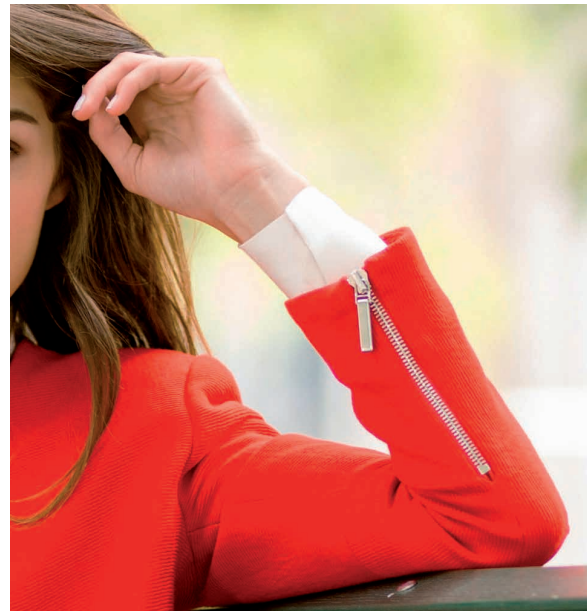
## CREATE THE LOOK WITH ZIPPERS

Zippers are great accessories. For our ensemble, we used a visible type of metallic zipper with beautiful finials to adorn the jacket, sleeves and skirt.



### A GENEROUS PACKAGE OF ACCESSORIES INCLUDED

Among others, all three versions include seven presser feet. This enables you to select the presser foot that is suitable for a variety of sewing projects.



### ZIPPER FOOT FOR EASY APPLICATION

The zipper foot E, that is included in the standard accessories, is an essential tool to facilitate the application of a zipper in a neat, easy and quick way.

All the feet have a click-on system, so you can change them in no time.

### SIMPLE OPERATION AND INVALUABLE FUNCTIONS

- ▶ **Direct access** buttons to essential functions: Start/ Stop, easy reverse, locking stitch, needle up/down, thread cutter
- ▶ **Automatic locking** stitch to automatically finish the seam with a locking stitch
- ▶ **Automatic thread cutter** on 560 and 570 time-saving and easily operated
- ▶ **Direct stitch selection** for the four most used patterns from the selection panel
- ▶ **Memory function** on 570 for programming personal stitch combinations



Stress-free sewing with elna eXperience:

Many practical features make your sewing tasks easier, quicker and pleasanter.



Photo shooting location:  
Le Petit Manoir, Morges.



## REUSE, RESHAPE, CREATE

Bring new color and life into your bedroom! With the help of our eXperience 540S, we used two existing duvet covers to create a quilted bedspread. The original border and lining from the second cover create a fancy, yet soft design.

Out of the pillow covers we made several fantasy cushions using applique, large buttons and different decorative stitches. There are no limits for making fun and astonishing accessories!

Find the tutorial to realize this and other ideas for your interior design lookbook at [elna.com/Inspiration](http://elna.com/Inspiration).

# eXperience 520S-540S

## FOR FUNCTIONAL AND EASY SEWING

Ideal for beginners or occasional sewists, the eXperience 520S and 540S are the entry models in our range of electronic sewing machines. They are simple, speedy, responsive and fun to use. Your eXperience adapts to every mood and style. Team up with your new sewing machine and the job is already half done.



### A RELIABLE HELPMATE IN A FRESH DESIGN

We refreshed the look and feel of these beloved models for an all-new special edition in two versions: 520S and 540S. Combining robustness and performance, they offer a smart range of essential functions, such as manual foot pressure adjustment, reverse and lock stitch.

They feature 30 and 50 built-in 7-mm wide stitches respectively, including buttonholes. The stitch length and width can be selected automatically or modified manually. Because of particularly strong needle penetration, they handle many different fabrics, even the toughest. Also, with the built-in thread cutter and needle threader you will save time and increase efficiency.



### 1 - SATIN STITCH FOOT

A standard accessory, it is made of transparent plastic for perfect visibility and high precision when sewing decorative stitches or appliques.

### 2 - BUTTONHOLES

Among the selection of built-in stitches, the eXperience 520S and 540S offer respectively 6 and 3 styles of one-step buttonholes.

The automatic buttonhole foot is a very useful standard accessory for creating buttonholes that are perfectly sized to the buttons you are using.

TECHNICAL FEATURES		520S	540S	550	560	570
Sewing space		167,5 mm	167,5 mm	170 mm	170 mm	170 mm
GENERAL	4 Free arm	X	X	X	X	X
	Screen type	LED / 2-digit numeral	LED / 2-digit numeral	LCD screen	LCD screen	LCD screen
	1 Horizontal full rotary hook with clear bobbin cover	X	X	X	X	X
	3 Built-in needle threader	X	X	X	X	X
	7-piece retractable feed dog	X	X	X	X	X
	2 Lighting	1 bulb light	1 bulb light	1 built-in white LED	1 built-in white LED	1 built-in white LED
	Thread tension control	Manual	Manual	Manual	Manual	Manual
	Easy and guided bobbin threader with built-in thread cutter	-	-	X	X	X
	7 Presser foot pressure adjustment	X	X	X	X	X
	Extra-high presser foot position	Manual	Manual	Manual	Manual	Manual
	Accessory storage	1	1	1	1	1
	8 Extension table	-	-	X	X	X
	Stitch reference chart	On front cover	On front cover	Stored on the right side of the machine	Stored on the right side of the machine	Stored on the right side of the machine
	Spool pin	Horizontal type	Horizontal type	Horizontal type	Horizontal type	Horizontal type
FUNCTIONS WITH EASY-ACCESS BUTTONS	Start / Stop	-	-	X	X	X
	Reverse	X	X	X	X	X
	Automatic lock stitch	X	X	X	X	X
	Up / Down needle position	X	X	X	X	X
	5 Automatic thread cutter	-	-	-	X	X
	Direct stitch selection	4 designs	4 designs	4 designs	4 designs	4 designs
	Thread cutter memory key	-	-	-	X	X
	Memory key	-	-	-	-	Temporary memory
	Number of stitches	30	50	50	100	200
	One-step buttonhole	6	3	3	7	12
SEWING	Maximum stitch width (mm)	7	7	7	7	7
	Maximum stitch length (mm)	5	5	5	5	5
	6 Maximum number of stitches in pattern combination	-	-	-	-	50
	Variable needle positions	15	15	15	15	15

#### 520S-540S STANDARD ACCESSORIES

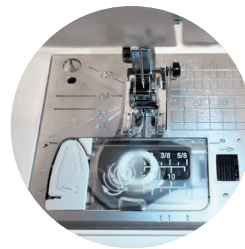
Presser feet: standard foot A, overedge foot C (540S), zipper foot E, satin stitch foot F, overlock foot M (520S), automatic buttonhole foot R.

Bobbins, seam ripper, needle set, spool holder large and small, spool stand, additional spool pin, spool felt, screwdriver, accessory case, foot controller, soft cover (520S), hard cover (540S).

#### 550-560-570 STANDARD ACCESSORIES

Presser feet: standard foot A, overedge foot C, zipper foot E, satin stitch foot F, blind hem foot G, ¼" seam foot O, automatic buttonhole foot R with stabilizer plate.

Bobbins, seam ripper, needle set, lint brush, spool holder large and small, additional spool pin, screwdriver, foot controller, instructional video (on elna website), hard cover.



1

#### DROP-IN HORIZONTAL ROTARY HOOK

The bobbin is loaded from above, making it effortless to start sewing and the clear cover enables you to see when the bobbin is running out. The 550, 560 and 570 models offer additionally a guide to further facilitate threading.



2

#### LED LIGHTING

Compared to conventional lighting, LED bulbs provide a brighter and shadow-free illumination on the eXperience 550, 560 and 570 models. Power-saving and eco-friendly, they are a smarter solution altogether.



3

#### BUILT-IN NEEDLE THREADER

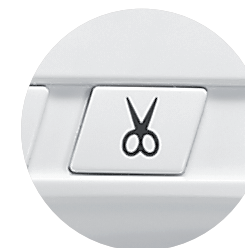
Just one movement and the needle is threaded! Save precious time and get down to work immediately.



4

#### FREE ARM

An invaluable feature for sewing tubular items, such as sleeves or trouser hems, as well as for smaller projects and darning.



5

#### AUTOMATIC THREAD CUTTER

The eXperience 560 and 570 are equipped with this time-saving feature simply operated with a button. You can easily and quickly cut the threads with one touch. On the 570 model, the thread cutter can also be programmed at the end of a stitch combination.



6

#### STITCHES AND COMBINATIONS

We selected a range of functional and beautiful decorative stitches, including elna-exclusive patterns, for delightful effects. The memory function is a special feature of the eXperience 570 that enables you to create and temporarily save individual stitch combinations.



7

#### EXTRA-HIGH PRESSER FOOT POSITION

Facilitates the positioning of your work when sewing thick fabrics or multiple layers.



8

#### EXTENSION TABLE

Included as a standard accessory with the eXperience 550-560-570 for working on large-scale projects.



*crafted with love*

Elna International Corp. SA, Geneva, Switzerland

Subject to change without notice

© 2017

[elna.com](http://elna.com)